





F2 TREM[®] Helmet

[Advanced Protection Helmets]

[High Level Protection for Industry]

Initially designed for fire-fighters, with a high performance, high temperature Polycarbonate shell, the F2  TREM[®] provides a unique protection for industrial workers, in those conditions where standard helmets cannot deliver. Its high comfort, easy-to-adjust harness makes it possible to wear the helmet full time without exhaustion, thus being permanently protected from chemicals, falling objects, sharp edges and electrical hazards. F2  TREM[®] provides the unique possibility to connect a face mask with no need to remove the helmet, thanks to its side slots for quick mask adaptation. Fitted with additional protection equipment (eye or face protection, hearing protection, communication system), it suits all working environments without compromising of worker's security.



GA3200 [High Level Protection for Industry]

[Application]

Adapted to **industrial environments**

Protection against **shock and sharp falling objects**

Protection against **chemical and electrical risks**

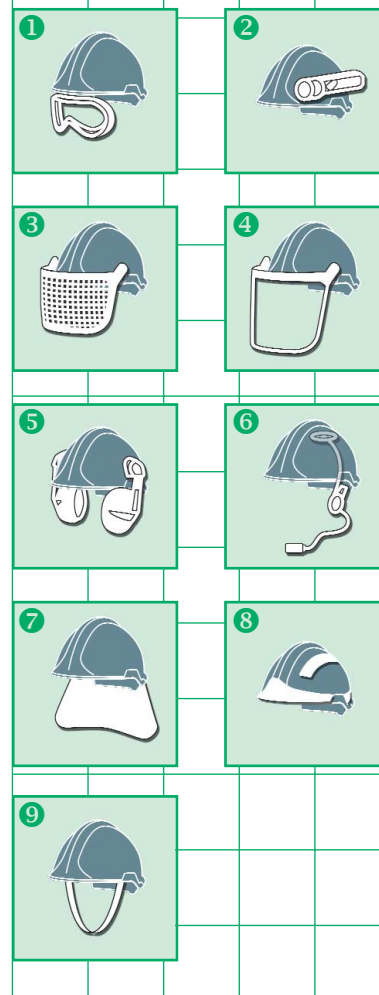


[Technical specifications]

Product Reference	GA3200
Certifications	EN397, 440V, LD, -30°C
Outer shell	Not vented, Injected high temperature thermoplastic material
Cradle	Quick adjustment, high comfort Ratchet patented cradle
Head Sizes	52 to 64 cm
Weight	570 g (± 30 g)
Available colors	White

[Options and Accessories]

1 Protection goggles (EN166)	GA3007NA (clear) GA3007OB (tinted)
2 XP Lamp with adapter	GA1457 + GA1426
3 Mesh Visor (EN1731)	SOR60060 (metal mesh) SOR60065 (nylon mesh)
4 Clear Visor (EN166)	SOR60040 (length 20 cm) SOR60041 (length 16 cm) SOR60042 (length 10 cm)
5 X-TREM Hearing protection	SOR12015 (EN352-3)
6 Communication system	GA103xxxx (Micro systems) GA102xxxx (Osteo systems)
7 Neck curtain	GA3240 (fire proof wool) T1900300 (Nomex)
8 Retro-reflective Stickers	GA3230*xx (color versions)
9 Chinstrap (2-point)	B0258213



[Your contacts worldwide]

MSA GALLET
BP 90,Z.I.Sud
01400 Châtillon sur Chalaronne
Tel:+33 [0] 474-55 01 55
Fax:+33 [0] 474-55 24 80
E-Mail: message@msa-gallet.fr
http://www.msa-gallet.fr

MSA Europe
Thiemannstrasse 1
12059 Berlin
Germany
Phone +49 [0] 30- 68 86 -555
Fax +49 [0] 30- 68 86 -1517
E-Mail: contact@msa-europe.com
http://www.msa-europe.com

MSA [Britain] Limited
East Shawhead
Coatbridge ML 54 TD
Scotland
Phone +44 [0] 1236- 42 49 66
Fax +44 [0] 1236- 44 08 81
E-Mail: info@msabritain.co.uk
http://www.msabritain.co.uk

MSA GALLET